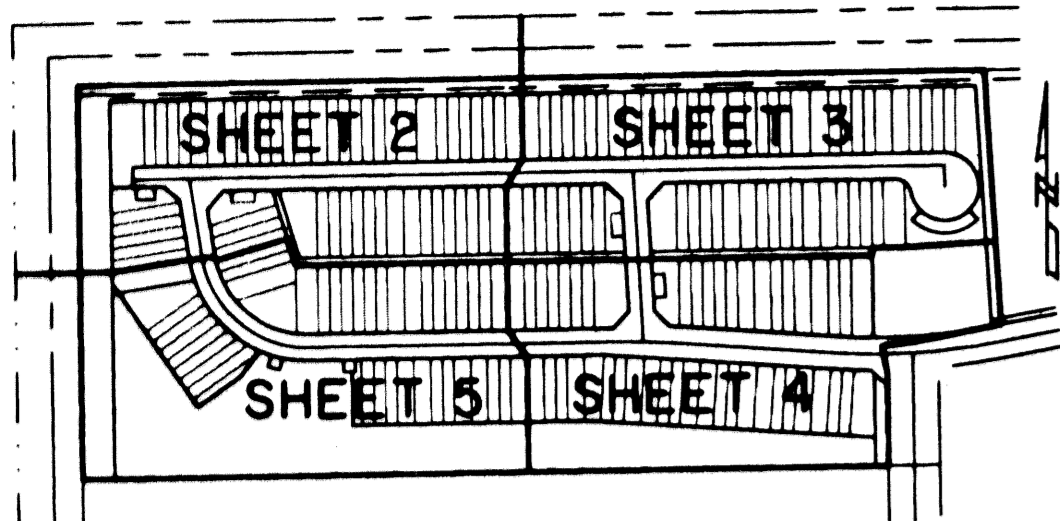


# MELROSE P.U.D. "VERONA LAKES" - TRACT "B-2"

0255-012

14

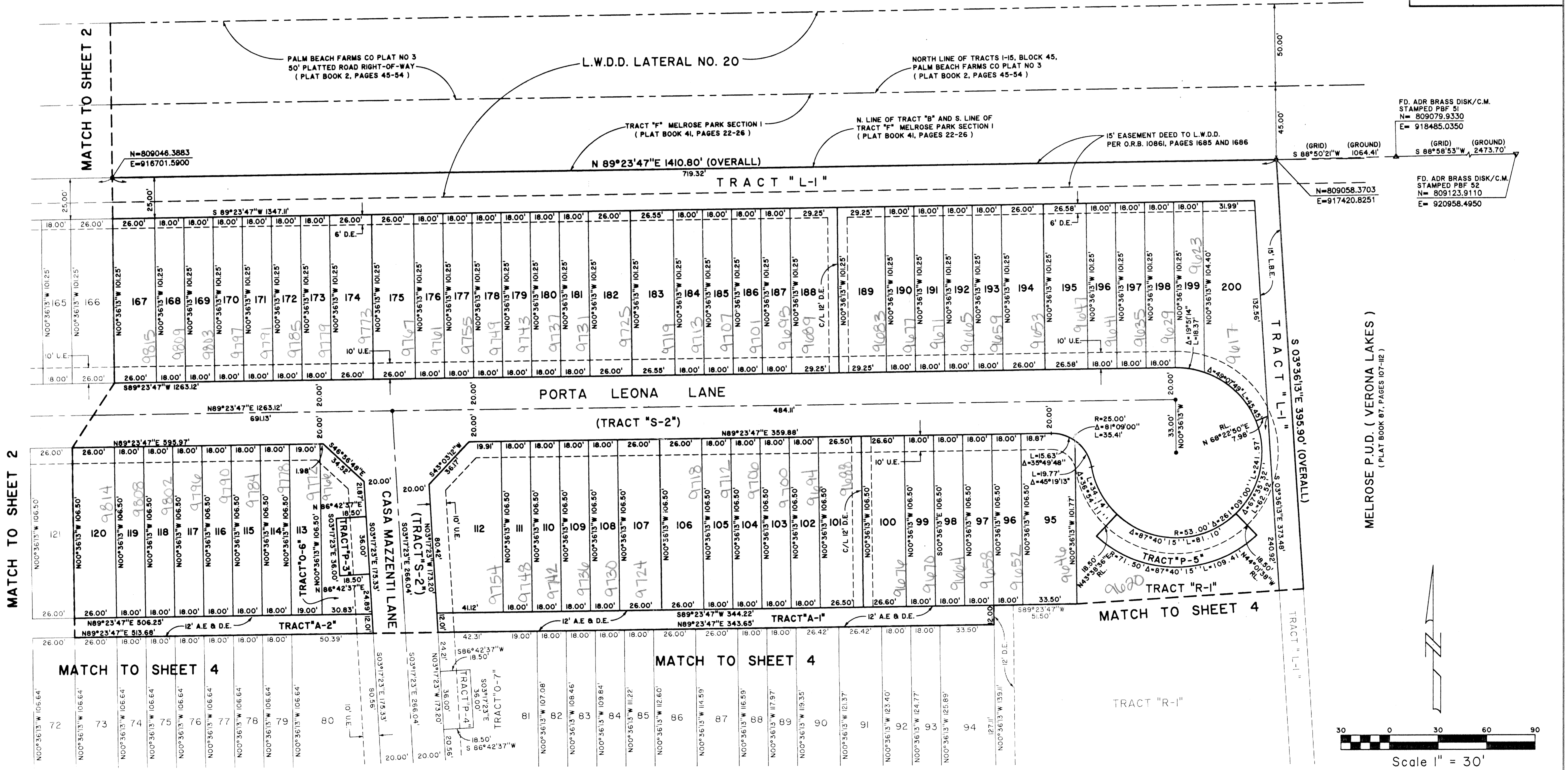
A PORTION OF A PLANNED UNIT DEVELOPMENT  
 LYING IN SECTION 18, TOWNSHIP 45 SOUTH, RANGE 42 EAST,  
 BEING THE REPLAT OF A PORTION OF TRACT "B", MELROSE PARK SECTION I,  
 IN PLAT BOOK 41, PAGES 22 THRU 26, PUBLIC RECORDS OF PALM BEACH COUNTY, FLORIDA.  
 SHEET 3 OF 5



KEY MAP  
NOT TO SCALE

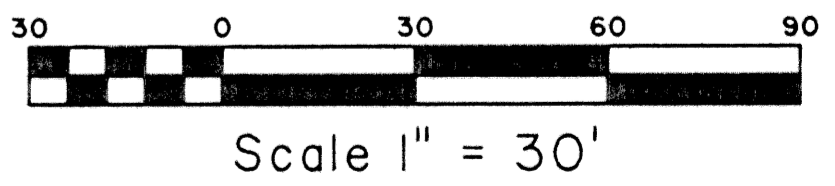
PALM BEACH FARMS COMPANY PLAT NO. 3  
 (PLAT BOOK 2, PAGES 45-54)

STATE OF FLORIDA SS  
 COUNTY OF PALM BEACH  
 THIS PLAT WAS FILED FOR RECORD AT \_\_\_\_\_  
 M., THIS \_\_\_\_\_ DAY OF \_\_\_\_\_ 2001  
 AND DULY RECORDED IN PLAT BOOK NO. \_\_\_\_\_  
 ON PAGE \_\_\_\_\_  
 DOROTHY H. WILKEN,  
 CLERK OF THE CIRCUIT COURT  
 BY \_\_\_\_\_ D.C.



FD. ADR BRASS DISK/C.M.  
 STAMPED PBF 51  
 N= 809079.9330  
 E= 918485.0350  
 (GRID) (GROUND)  
 S 88°50'21"W 1064.41'  
 (GRID) (GROUND)  
 S 88°58'53"W 2473.70'

FD. ADR BRASS DISK/C.M.  
 STAMPED PBF 52  
 N= 809123.9110  
 E= 920958.4950



**COORDINATE NOTE:**  
 STATE PLANE COORDINATES SHOWN ARE GRID DATUM, NAD 83 1990  
 ADJUSTMENT, FLORIDA EAST ZONE, COORDINATE SYSTEM 1983 STATE  
 PLANE, TRANSVERSE MERCATOR PROJECTION  
 LINEAR UNIT - US SURVEY FEET  
 ALL DISTANCES ARE GROUND  
 SCALE FACTOR = 1.000216  
 GROUND DISTANCE X SCALE FACTOR = GRID DISTANCE

N 89°23'47"E (PLAT BEARING)    00°21'03" COUNTERCLOCKWISE ROTATION  
 N 89°02'44"E (GRID BEARING)    PLAT TO GRID

THE NORTH LINE OF TRACT "B", MELROSE PARK SECTION I

**Landmark Surveying & Mapping Inc.**  
 1850 Forest Hill Boulevard  
 Ph. (561) 433-5405 Suite 100 W.P.B. Florida  
 LB # 4396

**MELROSE P.U.D. "VERONA LAKES" - TRACT "B-2"**

Plot Date: 1/2/99